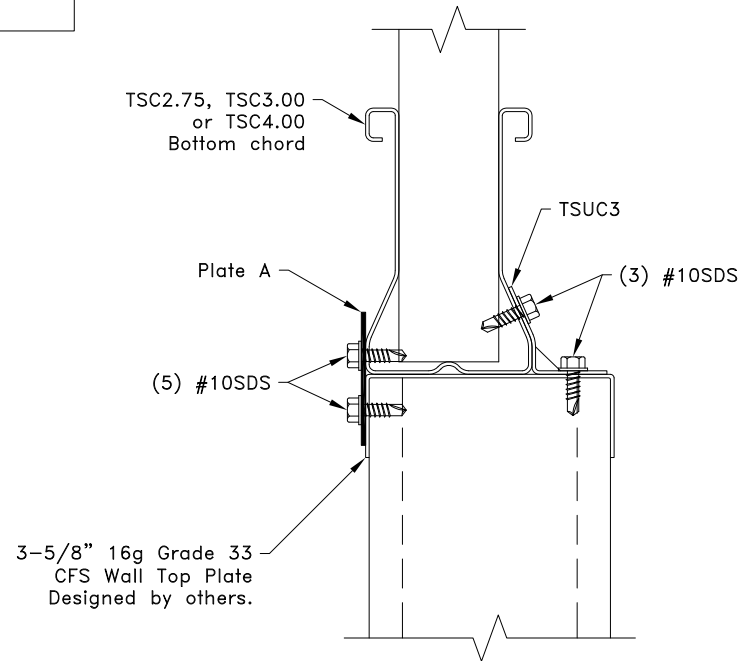


Maximum Loads in Combination

U = 500 lbs

P₁ = 900 lbs



End View

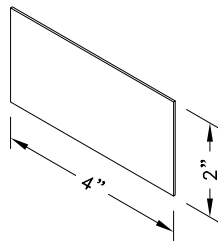


Plate A

16g ASTM A653 SS grade 33 G60
Bare Metal Thickness: t = 0.0538"

General Notes:

1. SDS = Self-Drilling Tapping Screw
2. Screw end distance and edge distance is 9/32" minimum. Screw spacing is 9/16" minimum.
3. P₁ refers to the lateral reaction, U refers to the uplift.
4. Cold-Formed Steel Calculations are per the 2010 addendum to the AISI 2007 "North American Specifications for the design of Cold-Formed Steel Structural members" (S100-07/S2-10).



www.TrusSteel.com

Florida: 2400 Lake Orange Drive, Suite 150 / Orlando, FL 32837 / (800) 755-6001
Missouri: 13723 Riverport Drive, Suite 200 / Maryland Heights, MO 63043 / (800) 326-4102

Uplift and Lateral Connection to CFS Wall

Alpine, a division of ITW Building Components Group, Inc. shall not be responsible for any performance failure in a connection due to a deviation from this detail. Any variation from this detail shall be approved in advance by Alpine, a division of ITW Building Components Group, Inc.

Custom Detail:

CD150819

Date:

09/01/15

Custom Detail Category:

Truss-To-Bearing Connection